

Index

Activities & Events:

UI-Community Programs
 Moscow-Victorian Christmas, Ice Cream Social, Parks & Rec, Renaissance Fair, Kenworthy Theatre, Latah County Fair, Young People's Art Festival

Arts:

UI-Idaho Repertory Theatre, Ridenbaugh Art Gallery
 UI Off Campus-Prichard Art Gallery
 Moscow-Moscow Arts Commission, Rendezvous for Kids

Biking:

Moscow-Paradise Path, Chipman Trail
 County-Latah Trail

Camping:

County-Robinson Park
 State of Idaho-Spring Valley, Moose Creek, McCroskey
 Federal Govt-Giant White Pine, Little Boulder, Laird

Driving:

County- Palouse Country tour, White Pine Drive

Golf:

UI-Golf Course, Frisbee Golf Course

Gyms:

UI-SRC, Memorial Gym, Kibbie Dome
 Moscow-Hamilton Indoor Rec Center

Hiking:

County-Idlers Rest, Robinson Park
 State of Idaho-Spring Valley, Moose Creek, McCroskey
 Federal Govt-Giant White Pine, Little Boulder, Laird

History:

Moscow-McConnell Mansion Museum, Appaloosa Museum
 Kendrick-Lewis & Clark Kiosk

Libraries:

County-Latah County Library District

Parks:

Moscow-Lieuallen; Anderson; Berman Creekside, East City, Eggan, Eastgate, Friendship Square, Ghormley, Jim Lyle/Rotary, Kiwanis/Hordemann Pond, Lena Whitmore, Mountain View
 Potlatch-Scenic Six, Middle, Upper



Genesee-Memorial, Kiddie, Upper City

Deary-City

Troy-City

Kendrick-City, Travis

Juliaetta-Centennial

Bovill-Caroline's, East City

County-Robinson, Bateson-Hylton,

Blue Lagoon, Virgil Phillips

State of Idaho-Spring Valley, Moose

Creek, McCroskey

Federal Govt-Laird

Playfields:

UI-Guy Wicks

Moscow-Oylear, Lena Whitmore,

McDonald, Russell, West Park

County-Deary-Nelson Activity Field

Science/Natural History:

UI-Arboretum and Botanical Garden,

Shattuck Arboretum, W.F. Barr

Entomology Museum

UI Off Campus-Experimental Forest,

Pinestia-Guernsey

Moscow-Brink Nature Park,

Community Garden

Skating/Skateboarding:

Moscow-Palouse Ice Rink, Moscow

Skate Park

Swimming:

UI-Swim Center

Moscow-Hamilton-Lowe Aquatics

Center

Kendrick-City Park

Potlatch-Upper Park

Tennis:

UI-Admin Lawn, PEB, Kibbie Dome

Moscow-Junior High, Ghormley

Walking/Jogging:

UI-Campus tour

Moscow-Downtown tour, Residential

tour, Junior High track, Paradise

Path, Chipman Trail, Latah Trail

County-Idler's Rest, Potlatch

Neighborhoods tour, Kendrick's

Corkill Memorial Trail

Connect-the-Spots: A Guide to Special Places in Latah County



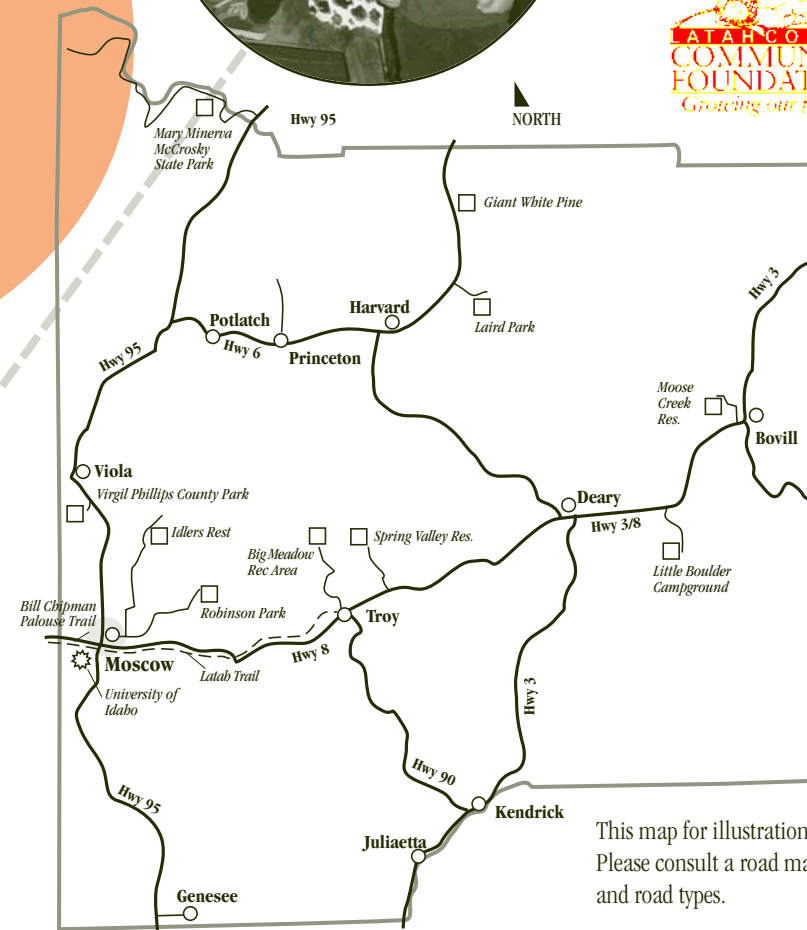
Welcome!

The next time you hear, "I'm bored. There's nothing to do," reach for **Connect-the-Spots**. **Connect-the-Spots: A Guide to Special Places in Latah County** is your family's resource to the many non-commercial cultural, educational, and recreational opportunities for children and youth in Latah County. The opportunities listed in **Connect-the-Spots** are those that will educate and stimulate and are all regularly available within the borders of our very own Latah County.

Organized by place, with an activities index on the back, **Connect-the-Spots** collects in one resource specific information about 85 recreational opportunities suitable for the entire family, including an activity or site description, location, cost, and date. Also included is contact information for the organization associated with the site or activity, including email and website addresses, where available.

Connect-the-Spots, a production of the Latah County Historical Society, was made possible by a grant from the Latah County Community Foundation. An online version of

Connect-the-Spots can be found at the historical society's website, <http://users.moscow.com/lchs>. To update or add information to **Connect-the-Spots**, or to request additional copies, please contact the Latah County Historical Society at 208-882-1004 or lchsoffice@moscow.com.



This map for illustration purposes only. Please consult a road map for distances and road types.

Photos courtesy of UI College of Agricultural and Life Sciences, Idaho Repertory Theatre, Palouse-Clearwater Environmental Institute, Appaloosa Museum and Heritage Center, Moscow Arts Commission, Latah County Historical Society, and Geoff Crimmins, Moscow-Pullman Daily News.

University of Idaho Campus

Brochure and map of self-guided campus tour available from New Student Services: 885-6163, nss@uidaho.edu

Campus Recreation:

www.webs.uidaho.edu/campus_recreation
 885-6381 / email address: camprec@uidaho.edu

1. Nine-hole Frisbee golf course located around Memorial Gymnasium, Swim Center, Physical Education Building and the College of Education building; course available on handout
2. Swim Center located in Physical Education Building; fee
3. Tennis courts: Administration Lawn and behind Memorial Gymnasium. During the winter, courts are set up in the Kibbie Dome.
4. Weights and exercise equipment: Student Recreation Center (SRC): fee for faculty/staff/public, Memorial Gymnasium and Kibbie Dome: no fee for faculty, staff, students
5. Guy Wicks Field, natural grass field complex located on western edge of campus: five softball fields, one baseball field, one rugby field, one recreational soccer field, and one varsity field.

Arboretums:

www.uidaho.edu/arboretum/about.html,
 885-5978 / pwarnick@uidaho.edu

1. Arboretum and Botanical Garden: 63-acre site located south of the President's residence on Nez Perce Drive.
2. Charles Houston Shattuck Arboretum, located west of Administration Building

University of Idaho Golf Course:

www.webs.uidaho.edu/golf/
 885-6171 / kandicen@uidaho.edu
 72-par course located on southwestern edge of campus.

Idaho Repertory Theatre:

www.class.uidaho.edu/irt
 885-5182 / theatre@uidaho.edu
 IRT for Youth (IRT-Y): performances for children and youth; fee

Community Programs:

www.dfa.uidaho.edu/ceis/cp
 885-2347 / conferences@uidaho.edu
 Courses and programs for children and youth, including *Kids College*, *Mom or Dad & Me*, *Youth Outdoors*, and *Swim Classes*; fee

W.F. Barr Entomology Museum: room 136, E.J. Iddings Agricultural Science Building 885-7079 / fmerickel@uidaho.edu No fee but visits are by appointment.

Ridenbaugh Student Art Gallery: www.uidaho.edu/galleries/ridenbaugh 885-6043

UI~Off Campus Locations in Latah County:

UI Prichard Art Gallery, 414/416 South Main Street, Moscow, 885-3586

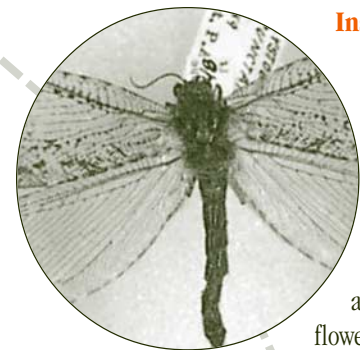
University of Idaho Experimental Forest: www.cnr.uidaho.edu/expforest

885-5078 / email: debbie@uidaho.edu Within the Experimental Forest is Big Meadow Recreation Area, roughly four miles northwest of Troy off Big Meadow Road. Open for hiking, mountain biking, cross-country skiing. College of Natural Resources also maintains an outdoor classroom open to the public: Pinestia-Guernsey, a 47.5 acre site north of Princeton off Hatter Creek Road.

Moscow

Latah County Historical Society:

- www.users.moscow.com/lchs 882-1004 / lchsoffice@moscow.com
McConnell Mansion Museum: 110 South Adams Centennial Annex: 327 East Second Street
1. Brochure and map: *A Walking Tour of Downtown Moscow*, small fee.
 2. Brochure and map: *A Walking Tour of Residential Moscow*, small fee.
 3. McConnell Mansion Museum, 110 South Adams. Hours: Tuesday – Saturday, 1:00 – 4:00 October through April and 1:00 – 5:00 May through September: exhibits and treasure hunts for children and youth
 4. Driving tour brochure and map: *The Palouse Country: A Tour of Discovery through Whitman & Latah Counties*, no charge
 5. Victorian Christmas Open House: second Saturday in December, 1:00-4:00 p.m. McConnell Mansion Museum
 6. Ice Cream Social and Chautauqua: Summer-time family event



Appaloosa Museum and Heritage Center: www.appaloosamuseum.org, 2720 West Pullman Road, Moscow 882-5578, x 279 / museum@appaloosa.org Hours: Tuesday through Friday, 10:00 – 5:00 and Saturday, 10:00 – 4:00.

1. Christmas Open House: Santa arrives riding an Appaloosa on the first Saturday in December, 10:00 – 12:00 noon.

Palouse-Clearwater Environmental Institute:

- www.pcei.org, 882-1444 / pcei@pcei.org
1. Carol Rylie Brink Nature Park, located near Sixth and Mountain View Road.
 2. Moscow Community Garden, 1050 West C Street: available to anyone wishing to grow organic flowers or food

City Parks and Playfields:

- www.ci.moscow.id.us/cityparks/index.asp 883-7085
1. Almon Asbury Lieuallen Park, Residence and Lieuallen, 1.57-acre park with open play area, picnic area, and playground.
 2. Anderson Frontier Park, West Palouse River Drive, 4.6-acre park with open play area, covered picnic shelter, picnic area, playground, and basketball court.
 3. Berman Creekside Park, 338 Styner Avenue, 4.17-acre park with open play area and picnic area.
 4. Eggan Youth Center, 1515 D Street: www.moscow.id.us/Parks&Rec/default.htm 883-7085 Offers recreational opportunities for youth including an indoor facility with pool tables, table tennis, foosball, video games, and an outdoor basketball court.
 5. East City Park, Third and Hayes, 7.04-acre park with open play areas, covered picnic shelter, playground, restrooms, volleyball court, basketball court, and horseshoe pits.
 6. Eastgate Park, Nez Perce and Kamiaken, 1.75-acre park with open play area, picnic area, and playground.
 7. Friendship Square, Fourth and Main, downtown park with picnic area and playground.
 8. Ghormley Park, Third and Home, 10.54-acre park with open play area, covered picnic shelter, playground, restrooms, tennis courts, baseball field, basketball court, and horseshoes pits.



9. Hamilton-Lowe Aquatics Center: 830 North Mountain View. 882-7665 Swimming pools, water slides, and other aquatic activities, including swimming lessons. Fee. June- Sept.
10. Hamilton Indoor Recreation Center: directly east of Aquatics Center, 883-7085. Open Spring 2004, Gym sports, multi-purpose room. Fees for classes only.
11. Joseph Street Fields: corner of Joseph and Mountain View: softball and general recreation.
12. Kiwanis Park/Hordemann Pond, D and Eisenhower, 2.75-acre park with open play area, covered picnic shelter, picnic area, playground, and restrooms.
13. Jim Lyle/Rotary Park, F and Orchard, 2.14-acre park with open play area, picnic area, and playground.
14. Lena Whitmore Park, Third and Cleveland, 3-acre park with open play area, covered picnic shelter, playground, restrooms, and basketball court.
15. Moscow Skate Park, just east of Eggan Youth Center
16. Mountain View Park, north on Mountain View Road, 16-acre park with open play areas, covered picnic shelter, picnic area, playground, restrooms, football field, soccer field, baseball fields, and basketball court.
17. Oylear Playfields (Eggan Youth Center): 1515 D Street: soccer and general recreation.

Moscow Arts Commission:

- www.ci.moscow.id.us/mac/index.asp 883-7036 / dheath@ci.moscow.id.us
1. Youth Choir performs year-round, fee.
 2. Young People's Arts Festivals, held twice yearly for children grades 1 through 6
 3. Third Street Gallery, second and third floors of City Hall, 206 East Third Street, exhibits works of local and regional artists.

Moscow School District:

- www.sd281.k12.id.us Superintendent's Office: 882-1120
1. Tennis courts on north side of D Street across from Eggan Youth Center
 2. Running track on south side of F Street
 3. Lena Whitmore Elementary School: 110 S. Blaine
 4. McDonald Elementary School: 2323 East D Street
 5. Russell Elementary School: 119 N. Adams
 6. West Park Elementary School: 510 Home

Moscow Parks and Rec:

www.ci.moscow.id.us/parks/index.asp 883-7085 Activities brochure mailed to Moscow homes four times/year.

Moscow – Miscellaneous Paradise Path: 1.47-mile non-motorized trail between downtown Moscow and UI campus

Bill Chipman Palouse Trail: 7-mile non-motorized trail connecting Moscow and Pullman

Palouse Ice Rink: www.palouseicerink.com 882-7188 / Latah County Fairgrounds: 1021 Harold Street. Public skating, figure skating and hockey.

Latah County Fair: www.latahcountyfair.com 883-5722 / fmaki@latah.id.us, Latah County Fairgrounds: 1021 Harold Street. Held the second week of September: exhibits, events, and entertainment

Kenworthy Theatre: www.kenworthy.org 882-4127 / kpac@moscow.com, 508 South Main St. Summer film series for children and youth, weekly on Wednesdays

Renaissance Fair: www.moscowrenfair.org/ 882-1800 / East City Park Celebration with crafts, events, and entertainment held first weekend in May

Rendezvous for Kids: www.moscowmusic.com, East City Park, Two-day arts festival held third weekend in July.

Latah County

Latah Trail: www.latahtrailfoundation.org latahtrail@moscow.com Non-motorized trail, running parallel to S.H. 8, between Moscow and Troy

Latah County Library District:

www.latahlibrary.org 882-3925 - Headquarters Storytimes for toddlers and children are held at each district library, Bovill, Deary, Genesee, Juliaetta, Moscow, Potlatch, Troy.

Idlers Rest Nature Preserve:

www.palouselandtrust.org Privately-owned property north of Moscow managed by Palouse Land Trust. Walking/hiking trails through 35 acres. Follow Idlers Rest Road from where it begins at the northern end of Mountain View Road.



Driving tour brochure and map: see Latah County Historical Society

City of Potlatch 875-0708
1. *A Walking Tour of Potlatch Neighborhoods* brochure available for small fee from Latah County Historical Society, 882-1004 / lchsoffice@moscow.com.

2. Scenic Six Park, 125 Sixth Street: RV sites, covered picnic area, baseball field, playground, and walking paths.
3. Middle Park: open play area, basketball courts, restrooms, and tennis courts.
4. Upper Park: swimming pool and covered picnic shelter. Fee to use pool.
5. White Pine Drive: scenic byway along S.H. 6 with views of old growth timber and access to national recreational trails.

City of Genesee 285-1621

1. Memorial Park, Fir and Laurel: RV sites
2. Kiddie Park, Walnut and Laurel: playground, picnic shelter, tennis courts.
3. Upper City Park: ball fields, basketball courts, walking trails.

City of Deary 877-1582

1. Deary City Park, Main Street: covered picnic shelter and playground.
2. Nelson Activity Field, Division and Fifth: baseball field, playground, and basketball courts.

City of Troy 835-2741

1. Troy City Park, western entrance to town on S.H. 8: play area, baseball fields, basketball courts.

City of Kendrick 289-5157

1. Kendrick City Park, Sixth and Main: swimming pool, covered picnic shelter, playground. Fee to use pool.
2. Eddie Corkill Memorial Trail.
3. Travis Park, Main and A: RV sites.
4. Lewis & Clark Kiosk: City Park, Sixth and Main.

City of Juliaetta 276-7791

1. Centennial Park, Main Street: playground, baseball fields, covered picnic shelter, restrooms

City of Bovill 826-3603

1. Caroline's Park: gazebo, covered picnic shelter, tennis courts, playground.

2. East City Park: picnic area, baseball field, restrooms.

County Parks:

- www.latah.id.us/Dept/Parks_Main.html 883-5709 / parks@latah.id.us
1. Robinson Park, four miles east of Moscow: volleyball court, playground, open areas, walking trails.
 2. Bateson-Hylton Park, downtown Harvard.
 3. Blue Lagoon Park, six miles west of Bovill
 4. Virgil Phillips County Park: www.sd281.k12.id.us/pamp/pampnew/pfarmhome.htm: 160-acre site five miles north of Moscow specifically for use by children for the purpose of natural history exploration.

State of Idaho:

1. Spring Valley Reservoir: www2.state.id.us/fishgame: 296-acre recreation area near Troy surrounds the 55-acre fishing reservoir with restrooms, picnic tables, fishing docks, covered picnic shelter.
2. Moose Creek Park: www2.state.id.us/fishgame: three miles west of Bovill: 30-acre site with fishing reservoir with restrooms.
3. Mary Minerva McCroskey State Park, www.idahoparks.org/parks/mccroskey.html 30 miles north of Moscow: 5300-acre park features 18-mile Skyline Drive which gives access to 32 miles of multipurpose trails. Fees for shelter use and firewood permit.

Federal Government:

- U.S. Forest Service/Palouse Ranger District:** 875-1131: Potlatch Ranger Station.
1. Giant White Pine Campground, off White Pine Drive on Scenic Byway Highway 6: recreational area with campsites and hiking trails. Open Memorial Day through Labor Day. Fee to camp.
 2. Little Boulder Campground, three miles west of Helmer via S.H. 8: recreational area with campsites and hiking trails. Open Memorial Day through Labor Day. Fee to camp.
 3. Laird Park, three miles east of Harvard: recreational area with campsites, multi-use trails, picnic areas, fishing and swimming areas. Fee to camp.

